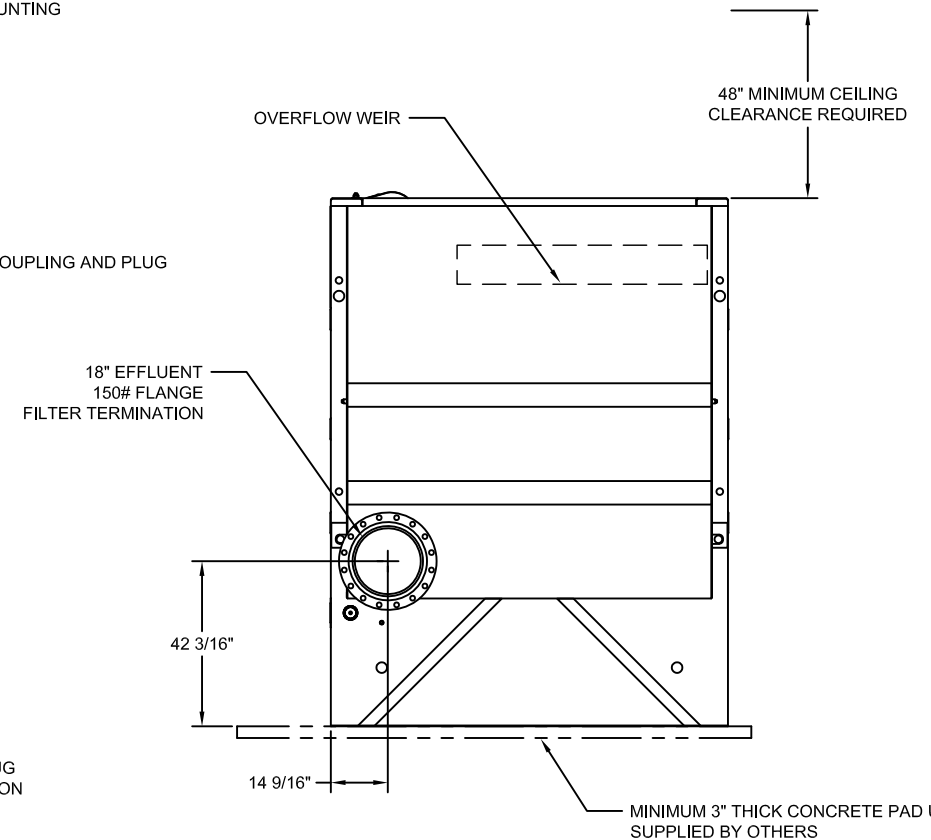
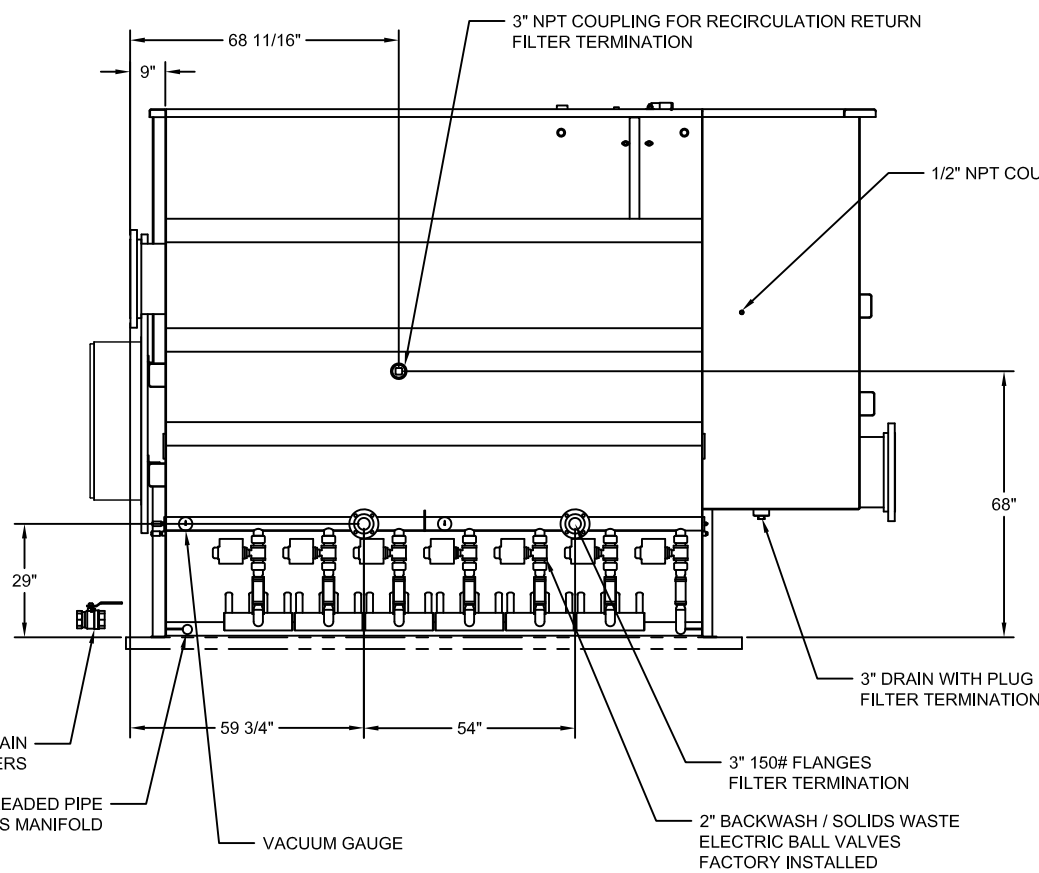
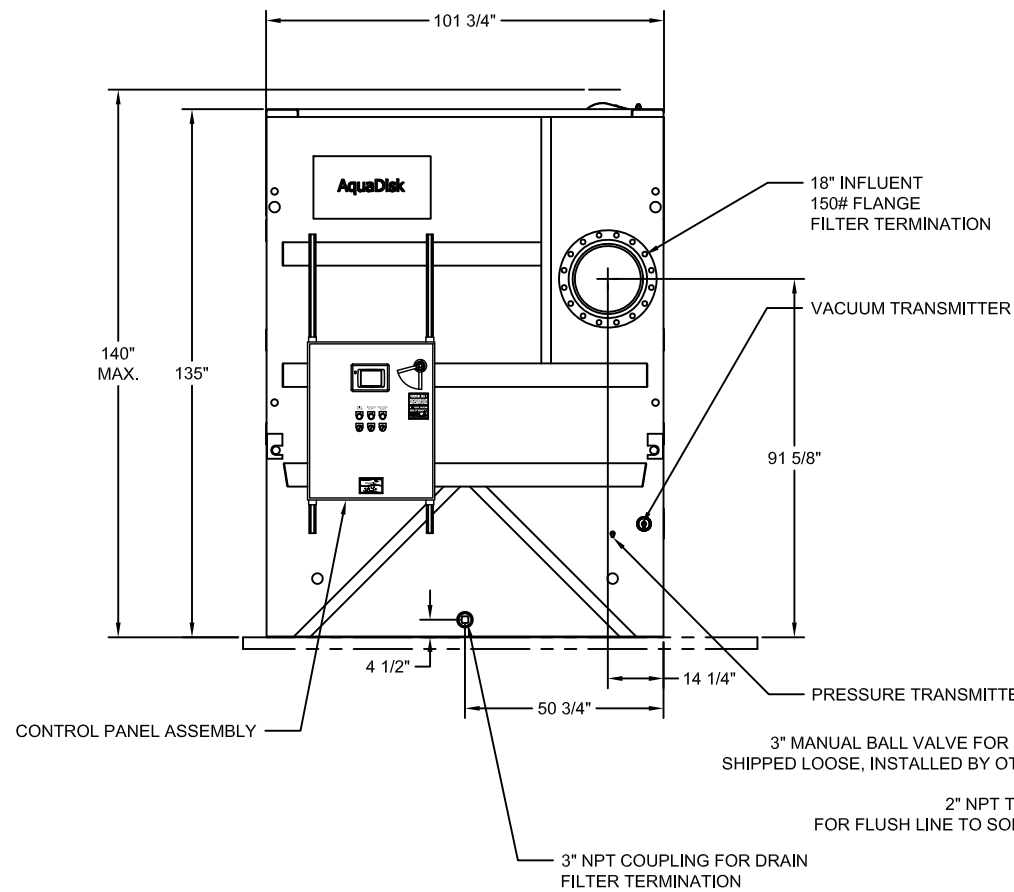
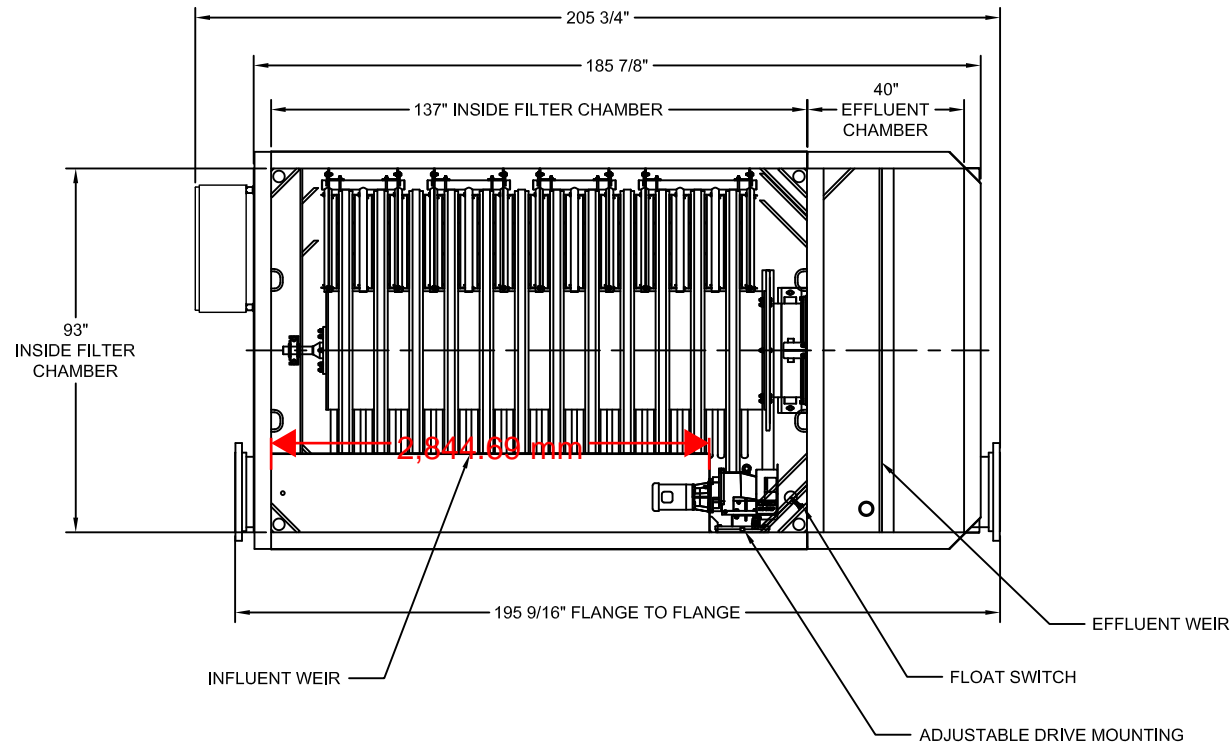


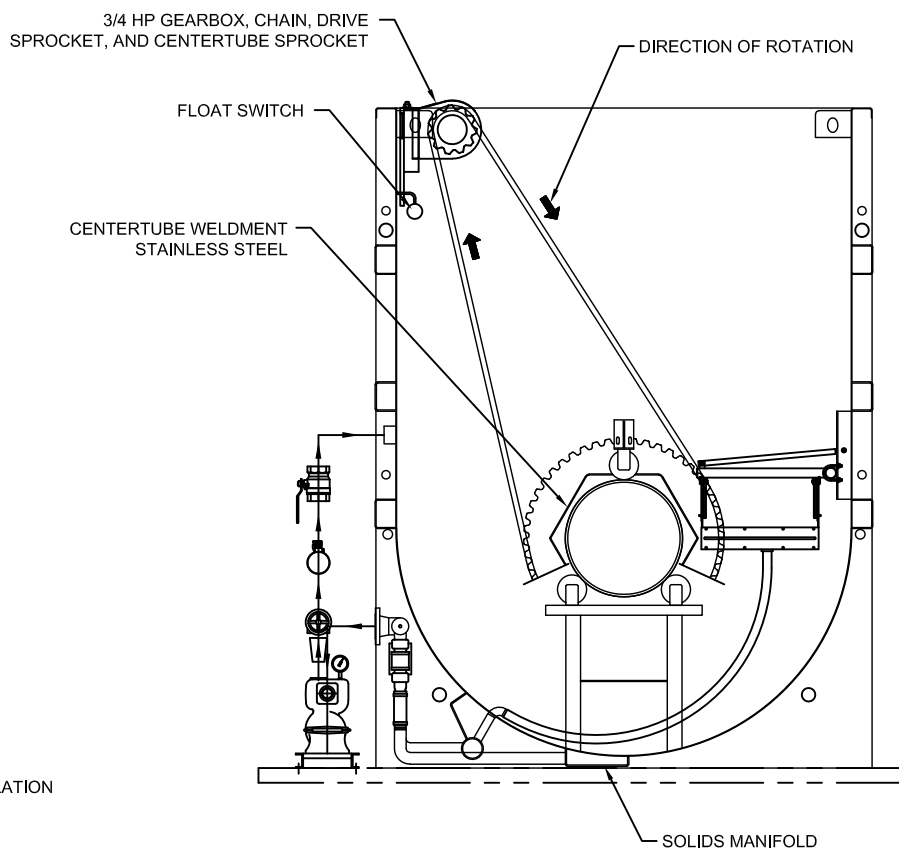
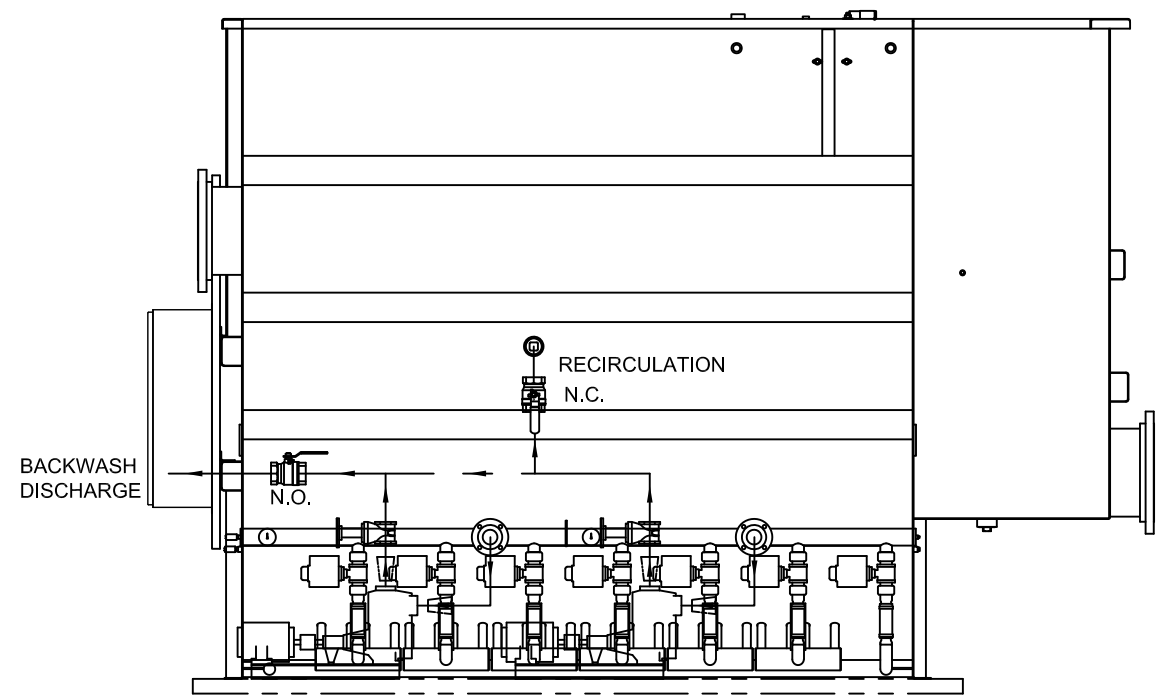
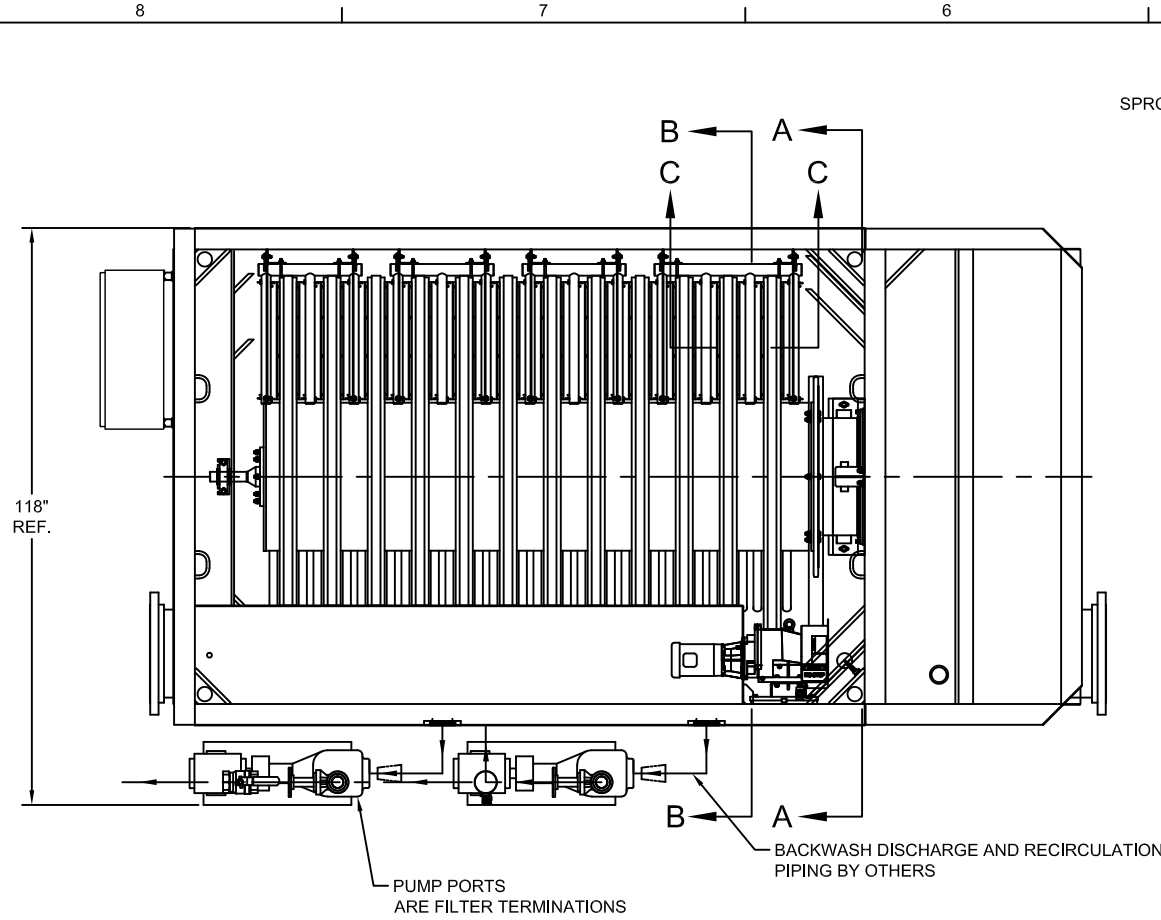
- 1 IF FREEZING IS A CONCERN AQUA-AEROBIC SYSTEMS RECOMMENDS THE FILTERS BE PLACED IN A HEATED BUILDING. IF A BUILDING IS NOT PROVIDED, ANY NECESSARY PROTECTION, INCLUDING BUT NOT LIMITED TO, HEAT TRACING AND INSULATION OF PUMPS AND PIPING, AS WELL AS PROTECTION AGAINST INTERNAL TANK FREEZING, SHALL BE PROVIDED BY THE INSTALLING CONTRACTOR.
- 2 THE FILTER CONTROL PANEL IS SHOWN IN THE STANDARD LOCATION. IF THE FILTER IS LOCATED OUTSIDE, THE CONTROL PANEL MAY BE RELOCATED TO THE SIDE OF THE FILTER FACING NORTH, TO LIMIT EXPOSING THE H.M.I. TO DIRECT SUNLIGHT.
- 3 THE GRAPHIC ELEMENTS OF THIS COMPUTER GENERATED DRAWING ARE DRAWN FULL SIZE. THE DIMENSIONS ARE ASSOCIATIVE. IF THE SIZE OF THE GRAPHIC ELEMENTS IS CHANGED THE DIMENSIONS WILL NOT BE CORRECT.
- 4 AN INFLUENT VALVE IS REQUIRED FOR ISOLATION / MAINTENANCE OF THE FILTER UNIT. THE INFLUENT VALVE SHALL BE PROVIDED BY OTHERS AND INSTALLED BY OTHERS.



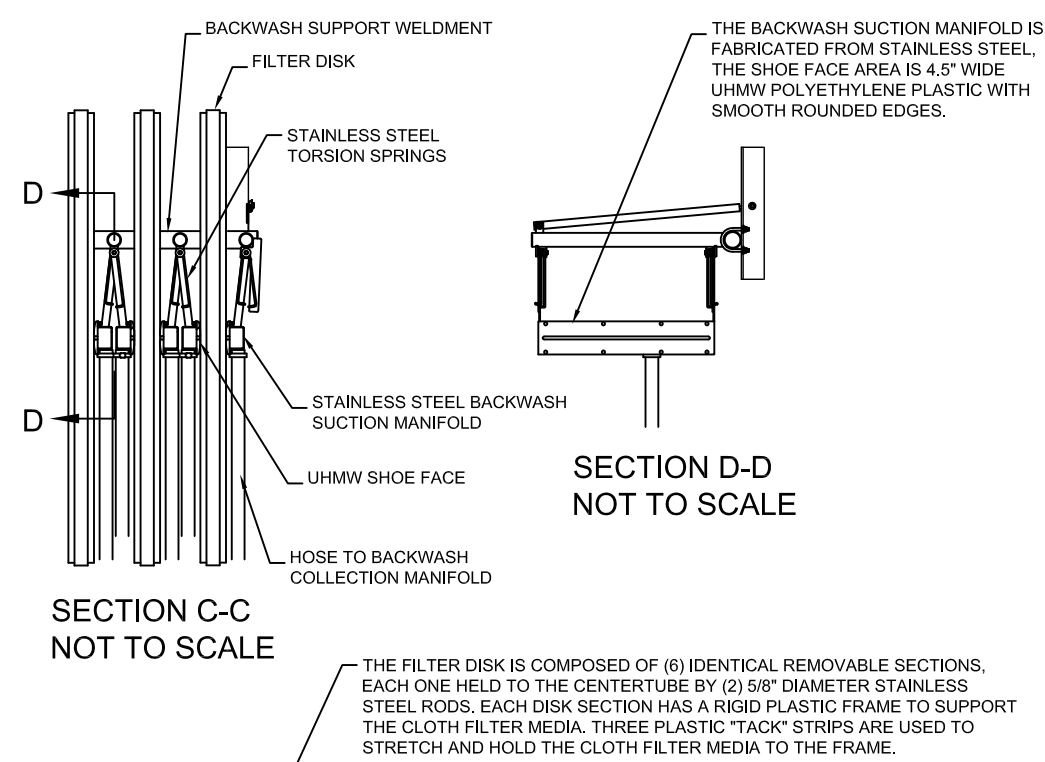
DRY WT. (LBS)	OPER. WT. (LBS)
13,000	60,500

NOT FOR CONSTRUCTION

JOB NAME:		AQUA-AEROBIC SYSTEMS, INC.		
JOB LOCATION:		UNLESS OTHERWISE SPECIFIED		
		FRACTIONAL DIMENSIONS ± 1/16"		
		ALL TWO PLACE DECIMALS ± 0.005"		
		ALL THREE PLACE DECIMALS ± 0.0005"		
		ALL ANGLES ± 1/2°		
MATERIAL:		ANSI		
SIMILAR TO:				
TYPE:				
DRAWN BY: SLT		DATE: 3-29-2011		
CHECKED BY:		DATE:		
WEIGHT:		SHEET: 1 OF 4		
DRAWING NUMBER: 2801907		SCALE: D		
REV	ERN / ECO	DATE	BY	REVISION DESCRIPTION
DRAWING NAME: AQUADISK FILTER MODEL ADFSP-54 X 12E-PC - RH				



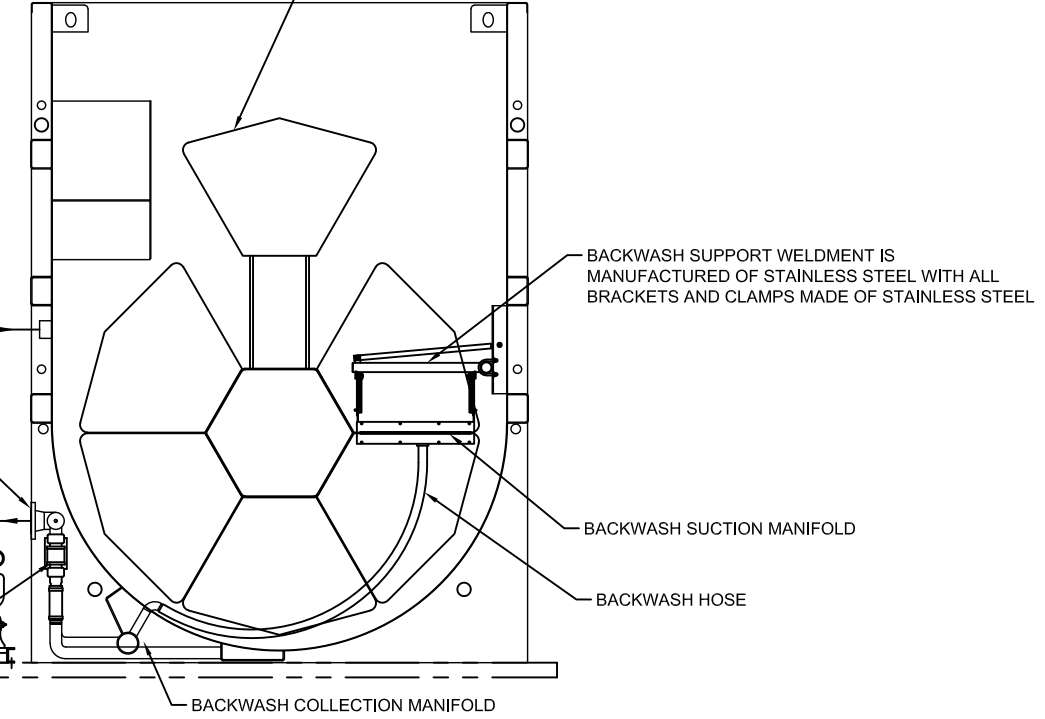
SECTION A-A



SECTION C-C NOT TO SCALE

SECTION D-D NOT TO SCALE

- 3" THREADED MANUAL BALL VALVES SUPPLIED LOOSE INSTALLED IN BACKWASH / WASTE LINE BY OTHERS NORMALLY CLOSED
- 3" THREADED MANUAL BALL VALVES SUPPLIED LOOSE INSTALLED IN BACKWASH / WASTE LINE BY OTHERS NORMALLY OPEN
- 3" 150# FLANGES FILTER TERMINATION
- 3" THREADED MANUAL GATE VALVES SUPPLIED LOOSE INSTALLED IN BACKWASH / WASTE PUMP DISCHARGE LINE BY OTHERS
- 3" TO 2" CONCENTRIC REDUCER AND UNIONS OR FLANGES BY THE INSTALLING CONTRACTOR TYPICAL EACH PUMP
- PRESSURE GAUGES SUPPLIED LOOSE INSTALLED BY OTHERS
- BACKWASH / WASTE PUMPS FIELD INSTALLED BY OTHERS
- 2" BACKWASH / SOLIDS WASTE ELECTRIC BALL VALVE ASSEMBLIES



SECTION B-B

NOT FOR CONSTRUCTION

1 ALL EXTERNAL PIPING AND FITTINGS SHALL BE PROVIDED BY OTHERS. ACTUAL PIPING LAYOUT AND PUMP LOCATION TO BE DETERMINED BY OTHERS WHEN THREADED OR WELDED PIPE IS USED IN LIEU OF FLANGED PIPE. UNIONS SHALL BE USED AT EACH PUMP AND VALVE CONNECTION TO FACILITATE SERVICE.

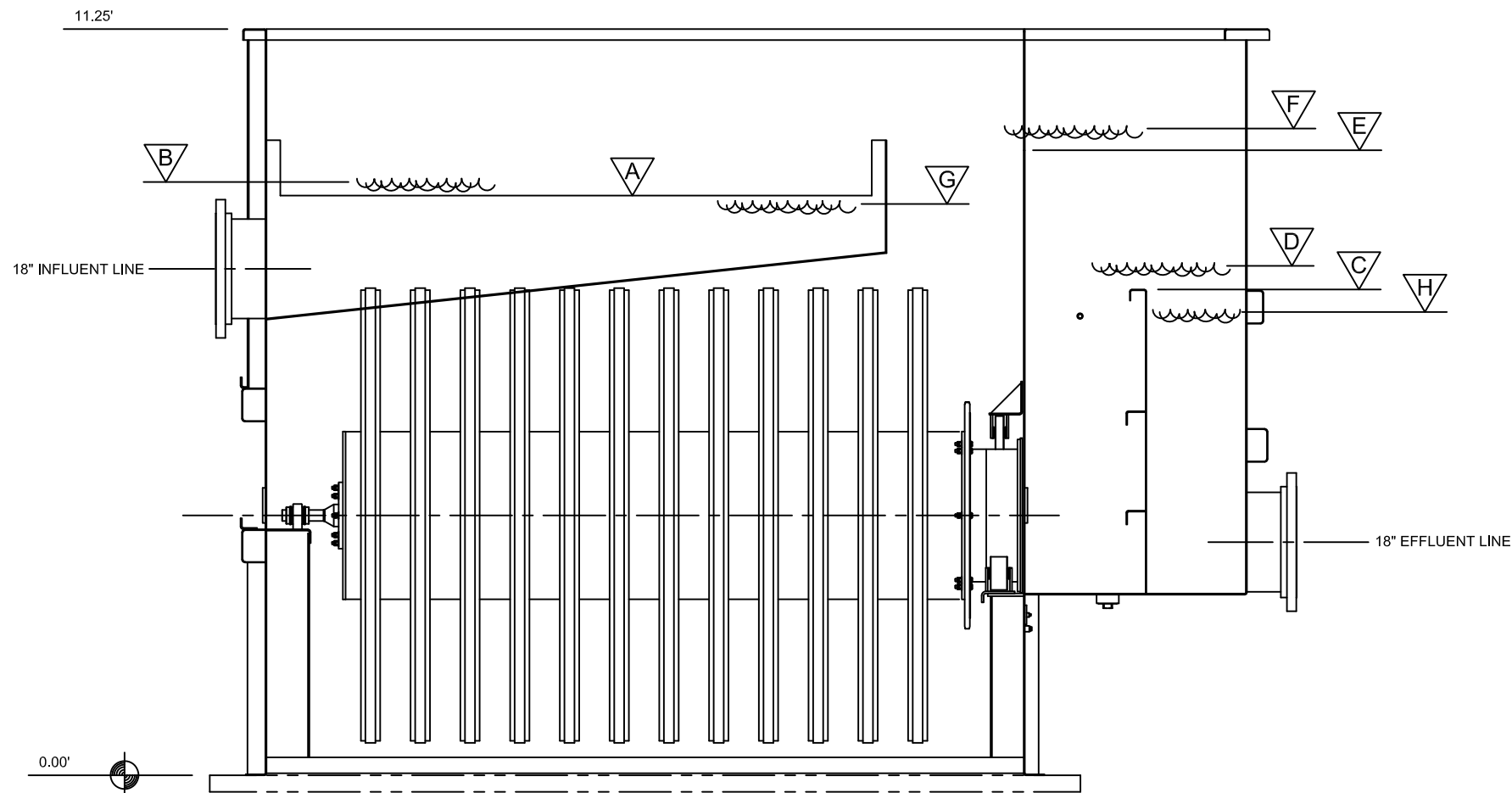
2 2 H.P. BACKWASH / WASTE PUMP CONNECTIONS ARE 2" N.P.T. BACKWASH / WASTE PIPING IS 3" DIAMETER. 3" TO 2" CONCENTRIC REDUCER FITTINGS SHALL BE PROVIDED AND INSTALLED BY OTHERS AT EACH PUMP PORT.

3 THE BACKWASH / WASTE PUMP CAPABILITIES ARE AS FOLLOWS:

- HORSEPOWER: 2 HP
- FLOW: 130 GPM
- TOTAL DYNAMIC HEAD: 23.2 FT
- ALLOWABLE DISCHARGE HEAD, AFTER FILTER LOSSES: 12 FT

FOR INSTALLATIONS THAT REQUIRE MORE DISCHARGE HEAD, ALTERNATIVE PUMPS ARE AVAILABLE. PLEASE CONSULT ENGINEERING TO VERIFY THE SUITABILITY OF THE DISCHARGE PIPING OR FOR SPECIAL PUMP REQUIREMENTS.

JOB NAME:		AQUA-AEROBIC SYSTEMS, INC.	
JOB LOCATION:		UNLESS OTHERWISE SPECIFIED	
		FRACTIONAL DIMENSIONS: ±.118	
		ALL TWO PLACE DECIMALS: ±.020	
		ALL THREE PLACE DECIMALS: ±.005	
		ALL ANGLES: ±.12°	
MATERIAL:		ANSI	
SIMILAR TO:			
TYPE:			
DRAWN BY: SLT		DATE: 3-29-2011	
CHECKED BY:		DATE:	
REV	ERN / ECO	DATE	BY
REVISION DESCRIPTION		WEIGHT:	SHEET: 2 OF 4
DRAWING NAME: AQUADISK FILTER MODEL ADFSP-54 X 12E-PC - RH		DRAWING NUMBER: 2801907	SCALE: SIZE: D



ELEVATION

A	8.74'	INFLUENT WEIR ELEVATION
B	9.03'	NAPPE OVER INFLUENT WEIR AVERAGE FLOW
	9.20'	NAPPE OVER INFLUENT WEIR MAXIMUM FLOW
C	7.32'	EFFLUENT WEIR ELEVATION
D	7.64'	NAPPE OVER EFFLUENT WEIR AVERAGE FLOW
	7.83'	NAPPE OVER EFFLUENT WEIR MAXIMUM FLOW
E	9.42'	OVERFLOW WEIR ELEVATION
F	9.82'	NAPPE OVER OVERFLOW WEIR AVERAGE FLOW
	10.06'	NAPPE OVER OVERFLOW WEIR MAXIMUM FLOW
G	8.70'	BACKWASH INITIATE LEVEL
H	6.82'	MAXIMUM AVAILABLE LIQUID LEVEL FOR EFFLUENT CONVEYANCE

HYDRAULIC PROFILE
 BASED UPON AVERAGE FLOW RATE OF 3.25 GPM PER SQUARE FOOT (3.0 MGD)
 BASED UPON MAXIMUM FLOW RATE OF 6.5 GPM PER SQUARE FOOT (6.0 MGD)

WEIR LENGTHS
 INFLUENT = 8.92'
 EFFLUENT = 7.75'
 OVERFLOW = 5.33'

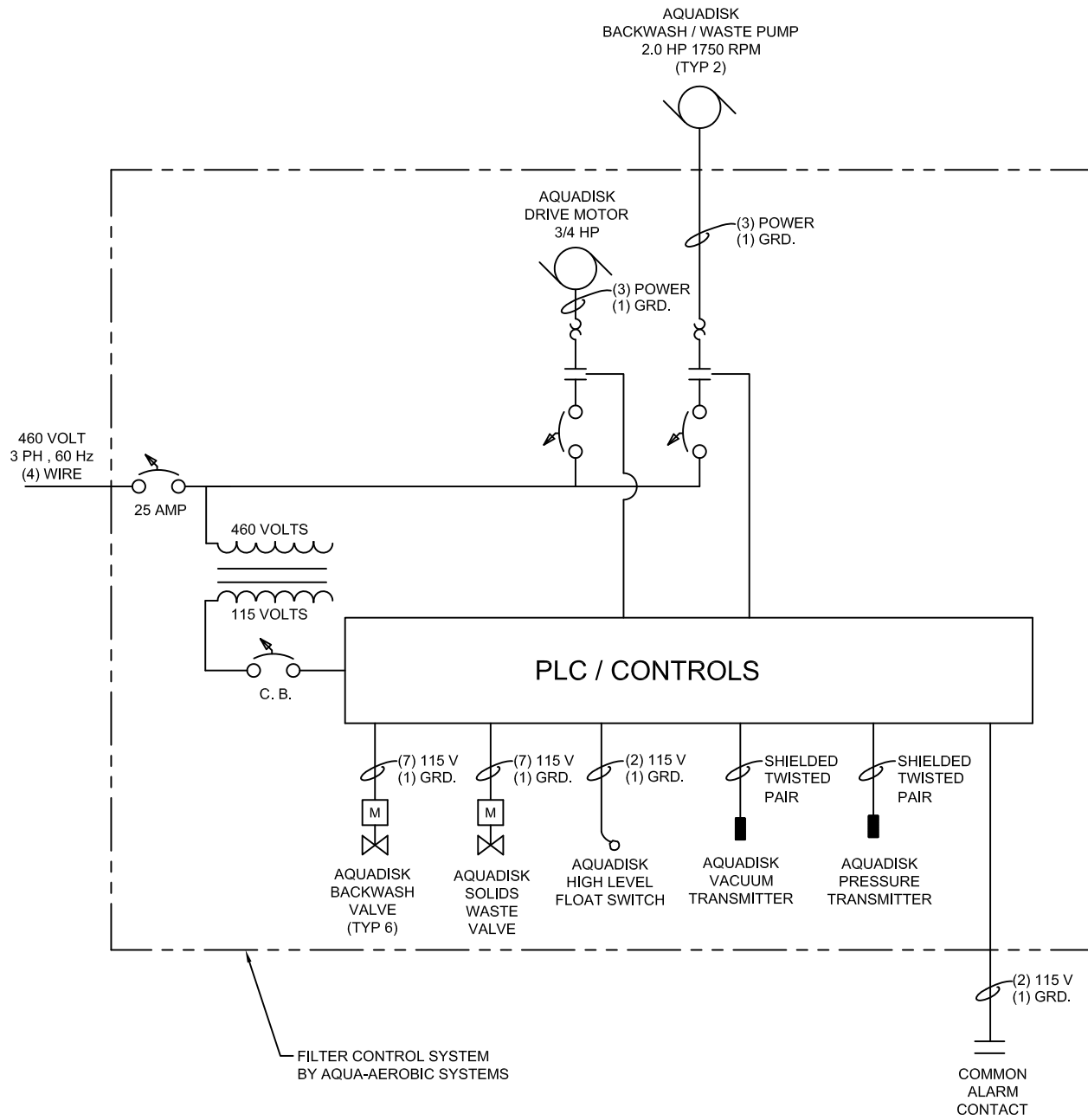
NOT FOR CONSTRUCTION

JOB NAME:		AQUA-AEROBIC SYSTEMS, INC.	
JOB LOCATION:			
DO NOT SCALE DRAWING		UNLESS OTHERWISE SPECIFIED <small>FRACTIONAL DIMENSIONS: ±0.125 ALL TWO PLACE DECIMALS: ±0.020 ALL THREE PLACE DECIMALS: ±0.005 ALL ANGLES: ±1.0°</small>	
MATERIAL:		ANSI	
SIMILAR TO:			
TYPE:			
DRAWN BY: SLT		DATE: 3-29-2011	
CHECKED BY:		DATE:	
REV	ERN / ECO	DATE	BY REVISION DESCRIPTION
DRAWING NAME: AQUADISK FILTER MODEL ADFSP-54 X 12E-PC - RH		DRAWING NUMBER: 2801907	SCALE: SIZE: D
		WEIGHT:	SHEET: 3 OF 4

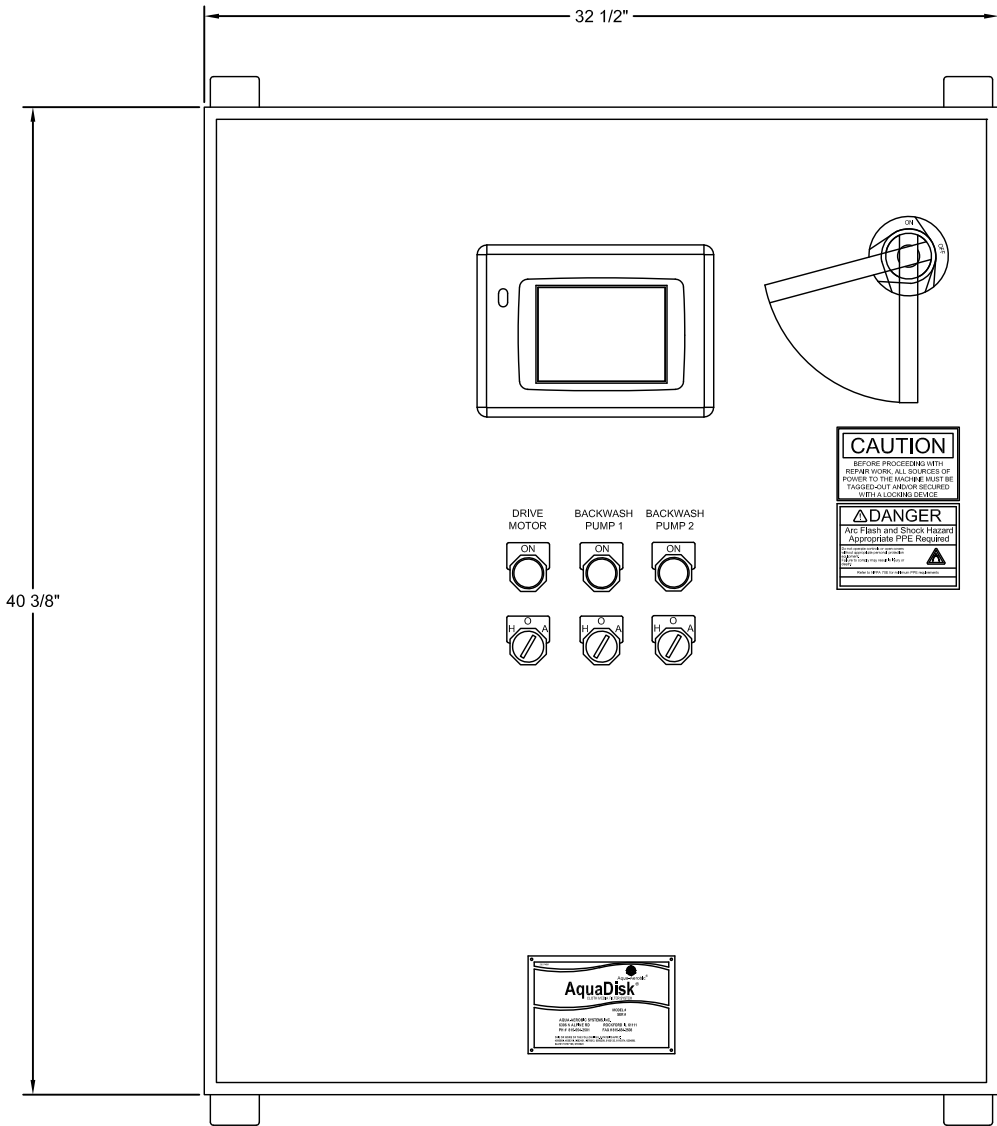
SYMBOL KEY

	MOTOR		CIRCUIT BREAKER		ELECTRICAL DISCONNECT		VARIABLE FREQUENCY DRIVE		TRANSDUCER		STARTER CONTACTOR
	MOTOR OPERATED VALVE		TRANSFORMER		MOTOR OVERLOAD		PNEUMATIC OPERATED VALVE		FUSE		FLOAT SWITCH

NOTE: SOME SYMBOLS MAY NOT BE APPLICABLE



FILTER CONTROL SYSTEM
BY AQUA-AEROBIC SYSTEMS



- 1 CONTROL PANEL
ENCLOSURE NEMA 4X WALL MOUNTED TYPE FIBERGLASS
FACTORY ASSEMBLED ON THE FILTER, DISASSEMBLED AND SHIPPED LOOSE.
REASSEMBLED ON-SITE BY CONTRACTOR.
IF THE FILTER IS LOCATED OUTSIDE, THE CONTROL PANEL
MAY BE RELOCATED TO THE SIDE OF THE FILTER
FACING NORTH TO LIMIT THE H.M.I. EXPOSURE TO DIRECT SUNLIGHT.

- 2 STANDARD CONTROL PANEL SIZE
40" HEIGHT X 32" WIDE X 12" DEEP

- 3 (1) CONTROL PANEL PER FILTER

NOT FOR CONSTRUCTION

JOB NAME:		AQUA-AEROBIC SYSTEMS, INC.	
JOB LOCATION:		UNLESS OTHERWISE SPECIFIED	
DO NOT SCALE DRAWING		FRACTIONAL DIMENSIONS: ±.125 ALL TWO PLACE DECIMALS: ±.020 ALL THREE PLACE DECIMALS: ±.005 ALL ANGLES: ±.1°	
MATERIAL:		ANSI	
SIMILAR TO:		TYPE:	
DRAWN BY: SLT		DATE: 3-29-2011	
CHECKED BY:		DATE:	
WEIGHT:		SHEET: 4 OF 4	
DRAWING NAME: AQUADISK FILTER MODEL ADFSP-54 X 12E-PC - RH		DRAWING NUMBER: 2801907	
SCALE:		SIZE: D	